



## In this Issue:

### Company News

City of Fredericksburg  
Awards WorldView  
Enterprise GIS  
Contract

### Tips and Tricks

Why the Delete Rows  
and Append Tools Are  
Your Friends

### Featured Client

North Carolina  
Ecosystem  
Enhancement Program

### Featured Solution

Rivanna River  
Watershed Land Use /  
Land Cover Project

Welcome to the spring issue of *WorldView Connection*, a quarterly e-newsletter bringing you the latest news, solutions, and technology tips from the GIS consulting firm [WorldView Solutions](#). We provide spatial data and application services to dozens of clients and this newsletter is an opportunity for our team to provide updates on our diverse work in the GIS community.

We hope you find this newsletter informative and encourage you to [contact](#) us with any feedback, questions, or ideas for future issues. If you know someone who you think would enjoy receiving this newsletter, please forward it along.

Enjoy,

The WorldView Team

## Company News

### [City of Fredericksburg Awards WorldView Enterprise GIS Contract](#)

WorldView Solutions has been contracted by the City of Fredericksburg, Virginia, to develop an enterprise GIS database for the City. WorldView is converting several dozen data layers into an enterprise GIS database, including parcel related data, transit information, E911 data, crime mapping information, and zoning data. Other project tasks include database design, map book development, user training, and the deployment of an internet mapping portal for both City staff and public users.



## Tips and Tricks

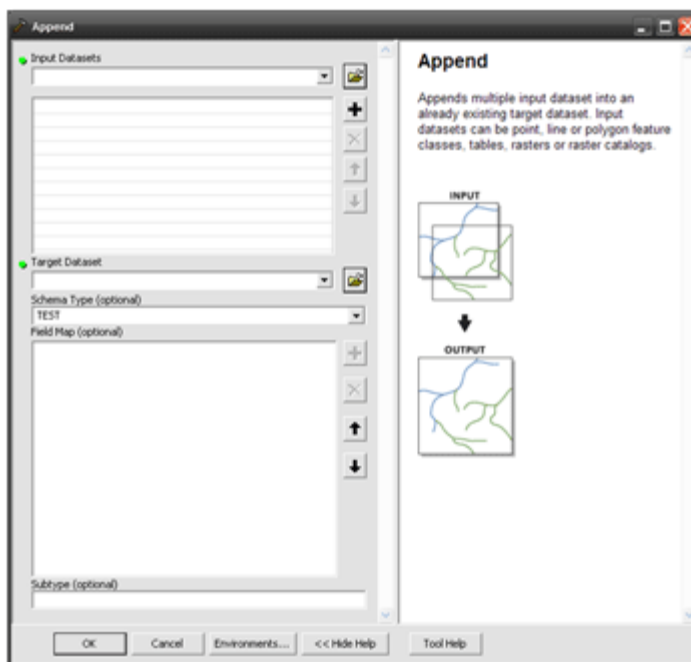
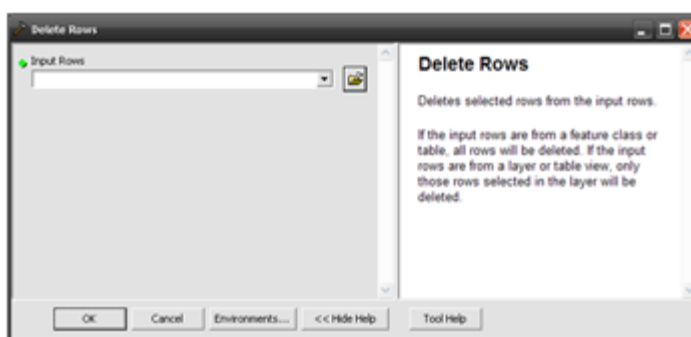
### [Why the Delete Rows and Append Tools Are Your Friends](#)

Many GIS users depend on ModelBuilder and Python to automate the integration of their GIS data with other systems in their organization. An assessor's office, for instance, may need to link assessment data with parcel data each night using tools in ArcGIS Desktop. One of the pitfalls of this type of data integration is the tendency to delete existing feature classes and replace them with new feature classes each time

this process is completed. Whenever a feature class is deleted, the schema of the database changes, which means that any open connections to the geodatabase must be closed, including web and desktop connections.

A better approach is to use the Delete Rows and Append commands to migrate new data into a geodatabase. The [Delete Rows](#) command quickly deletes all of the records from a table or feature class leaving the core feature class intact, yet empty. Then, using the [Append](#) command, data from another temporary feature class can be appended into the now empty feature class. The Append command also supports field mapping, so that if field names differ between the two feature classes, data can still be appended into the new feature class.

Both the Delete Rows and Append commands can be run without locking the database, allowing for updates to happen without disconnecting users or stopping map services.



## Featured Client

### North Carolina Ecosystem Enhancement Program

The Ecosystem Enhancement Program (EEP) is an innovative partnership program, established by North Carolina in 2003,

and committed to restoring, enhancing and protecting the State's wetlands and waterways. WorldView has a GIS services contract with EEP and the State Property Office to develop a comprehensive GIS database of conservation easements managed by the State. WorldView has converted hundreds of existing plats, deeds and other source documents into a statewide database of easement data that is used for ongoing EEP planning, field verification and analytic efforts.



[Learn](#) more about WorldView's clients.

## Featured Solution

### Rivanna River Watershed Land Use / Land Cover Project

---

Using automated feature extraction software, WorldView developed a comprehensive Land Use / Land Cover dataset for the Rivanna River Watershed in western Virginia. The goal of the project was to provide more effective watershed management, land conservation, and land use planning tools for the project partners, which included StreamWatch, The Nature Conservancy, Albemarle County, and the Rivanna River Basin Commission. In order to meet this goal, WorldView used an automated vector data extraction toolkit called [Feature Analyst](#). WorldView built a feature extraction routine that automated the initial extraction of core land use features depicting land cover classifications within one meter accuracy. This core data was supplemented with impervious surface data and manual classification of special land use types throughout the project area.



web: [www.worldviewsolutions.com](http://www.worldviewsolutions.com)  
email: [info@worldviewgis.com](mailto:info@worldviewgis.com)  
phone: 804-915-7628

[News](#) | [About WorldView](#) | [Services](#)