



## In this Issue:

### Company News

Henrico County Support Services Contract

### Featured Solution

City of Lynchburg

### Featured Partner

Virginia Commonwealth University's Center for Environmental Studies

### Staff News

New Team Members

### Tips and Tricks

ArcMap Easter Eggs

Welcome to the first issue of *WorldView Connection*, a quarterly e-newsletter bringing you the latest news, solutions, and technology tips from the GIS consulting firm [WorldView Solutions](#). We provide spatial data and application services to dozens of clients and this newsletter is an opportunity for our team to provide updates on our diverse work in the GIS community.

We hope you find this newsletter informative and encourage you to [contact](#) us with any feedback, questions, or ideas for future issues.

Enjoy,

The WorldView Team

## Company News

[Henrico County Support Services Contract](#)

For over a decade, [Henrico County](#) has been a leader in the development of GIS for local governments in Virginia. To build on this success, the Henrico County Department of Public Works has awarded WorldView a GIS services contract that will provide the County with spatial data and application services over a period of one year, with four optional renewal years. The County has also executed an [Enterprise License Agreement](#) with ESRI, and our team will work closely with the County to insure that this agreement provides a strong return on investment for the County. WorldView will continue to provide additional support services under its existing GIS services contract with the County's Department of Public Utilities.

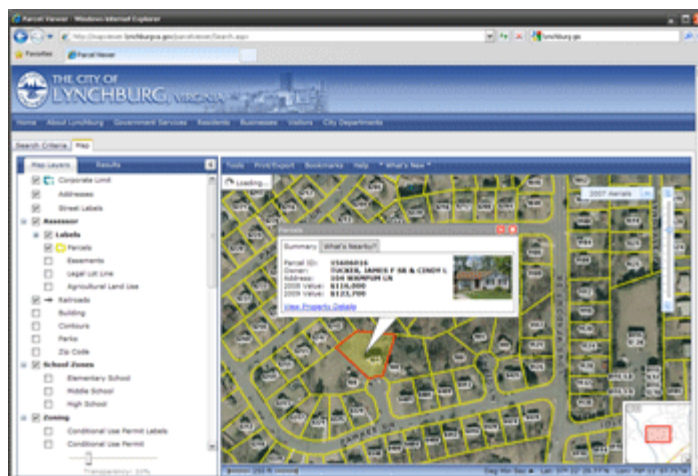


## Featured Solution

[City of Lynchburg](#)

As part of a GIS migration from Intergraph GeoMedia to ESRI's ArcGIS platform, the WorldView applications team developed a full-featured [parcel mapping application](#) that serves as a mapping portal for the Lynchburg community. The ArcGIS Server application provides direct access to a

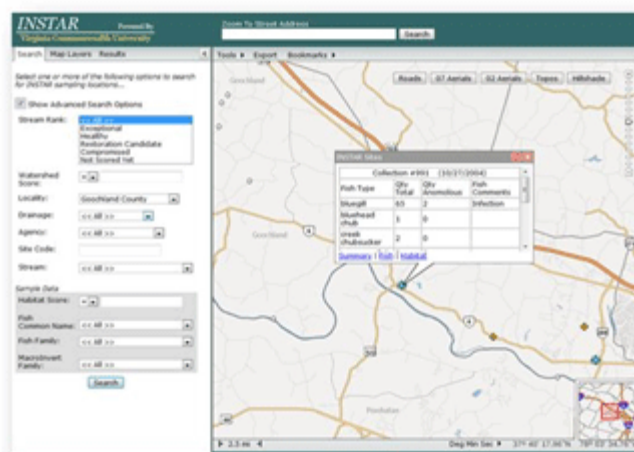
complete set of attributes coming from the City's ProVal assessment database and dozens of GIS layers available from the City's geodatabase. Functionality includes "find nearby" spatial querying, a "swipe" tool for detecting basemap changes, map redlining tools, and integration with Google StreetView data. In a recent [news article](#), the City's enterprise GIS project and web site was praised by users as a "fabulous tool".



## Featured Partner

Virginia Commonwealth University's  
Center for Environmental Studies

At Virginia Commonwealth University's Center for Environmental Studies, GIS is playing a crucial role in the way we study and protect the environment. Over the past three years, WorldView has partnered with VCU on eight projects. For its most recent project, WorldView helped VCU develop and maintain the [Interactive Stream Assessment Resource \(INSTAR\)](#), the largest comprehensive database on streams and rivers in Virginia. INSTAR was recently featured in the publication [Healthy Waters](#).



[Learn](#) more about WorldView's clients.

## Staff News

New Team Members

WorldView welcomes [Stuart Blankenship](#) to the team as applications manager. Prior to working for WorldView, Stu managed the Virginia Base Mapping Program for the Virginia Geographic Information Network. [Timothy Larkin](#) also joined WorldView this summer as an application developer and [James Martin](#) began working as a GIS technician in the company's production group.

## Tips and Tricks

### ArcMap Easter Eggs

---

Back in Version 9.0, when you started editing in ArcMap and typed Jerry on the keyboard, a picture of [Jerry Garcia](#) would pop up on the screen. Unfortunately, this easter egg has been removed, but ESRI still provides a wealth of functionality that is only available through shortcut keys. Here are some hidden ArcMap features that WorldView's production staff use every day:

When editing, do you find yourself accidentally snapping to features? You can suspend snapping by holding down the space bar while editing a feature.

When using the *Trace* or *Fillet* tools, hold down the O key for a hidden menu with some great options for using these tools.

Sometimes you want to undock a toolbar and keep it undocked. While moving a toolbar in ArcMap, hold down the control key to stop the toolbar from docking.

When you have selected more than one feature, hold down the N key to cycle through each record in the selection set.

web: [www.worldviewsolutions.com](http://www.worldviewsolutions.com)  
email: [info@worldviewgis.com](mailto:info@worldviewgis.com)  
phone: 804-915-7628

[News](#) | [About WorldView](#) | [Services](#)